



Sunday, June 30, 2019
10 a.m. - 12 p.m.

David Posnack JCC Orlove Auditorium
5850 S. Pine Island Road, Davie, FL 33328

A performance by the Exceptional Theater Company
and a Q&A with guest speakers to follow

Light refreshments will be served
Free and open to the community!
Everyone welcome

RSVP required: events@jfsbroward.org

EDUCATIONAL & EMPOWERMENT SERIES

Paving the Way "This is Me"

Join us for an inspirational morning celebrating adults with disabilities and their families, as they share their stories of breaking barriers, overcoming obstacles and paving the way to meaningful lives.

GUEST SPEAKERS

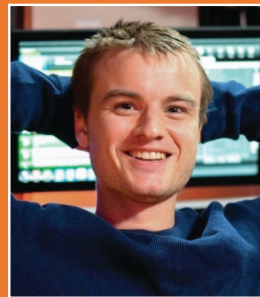


MODERATOR

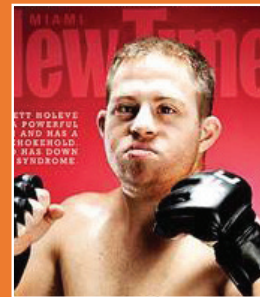
Katherine Magnoli
Ms. Wheelchair
Florida 2017
Children's Book Author



Bonnie Schmidt
Founder of
ScentsAbility



Bryan Boggiano
Journalist



Mitch & Garrett "G-Money" Holeve
Adaptive Fitness Trainers,
featured on ESPN



Nicole Whitman
Special Needs Educator,
featured on The Mighty



Edward Barbanell
Broadway and Film Actor

The Joshua's Path program at Goodman JFS educates and empowers families who have a loved one with a developmental disability by providing individualized consultations, assistance navigating the system, information, resources, and referrals. For more information, please visit: <https://www.jfsbroward.org/services/joshuas-path>.



Goodman JFS | www.jfsbroward.org | 954-370-2140

Goodman JFS of Broward (GJFS) is a non-profit 501(c)3 charitable organization, providing programs and services to those in need in Broward County since 1963. A copy of the official registration SC-00196 and financial information may be obtained from the Division of Consumer Services by calling 800-435-7352 within the State or visiting www.FloridaConsumerHelp.com. Registration does not imply endorsement, approval or recommendation by the State.